



# MicroStrain®

## Quick Start Guide

**Virtual Corset™**

**Firmware Version VCRST**

**Software Version 3.2.3**

### Welcome

- Thank you for purchasing MicroStrain's Virtual Corset™

### Software Installation

- Place the Virtual Corset™ CD in your CD-ROM drive and follow the on-screen instructions to install MicroStrain's Virtual Corset™ software.

### Hardware Installation

- Insert the male LEMO connector of the Virtual Corset™ communication cable into the Virtual Corset™ observing the keyed slots.
- Connect the female RS-232 connector of the Virtual Corset™ communication cable into a free serial port on your computer.
- Slide the battery cover off the Virtual Corset™.
- Insert the battery into the Virtual Corset™ battery slot being careful to observe the polarity indicators embossed in the slot.
- Slide the battery cover back in place.
- You will feel a short vibration indicating the Virtual Corset™ has powered-up.

### Software Operations

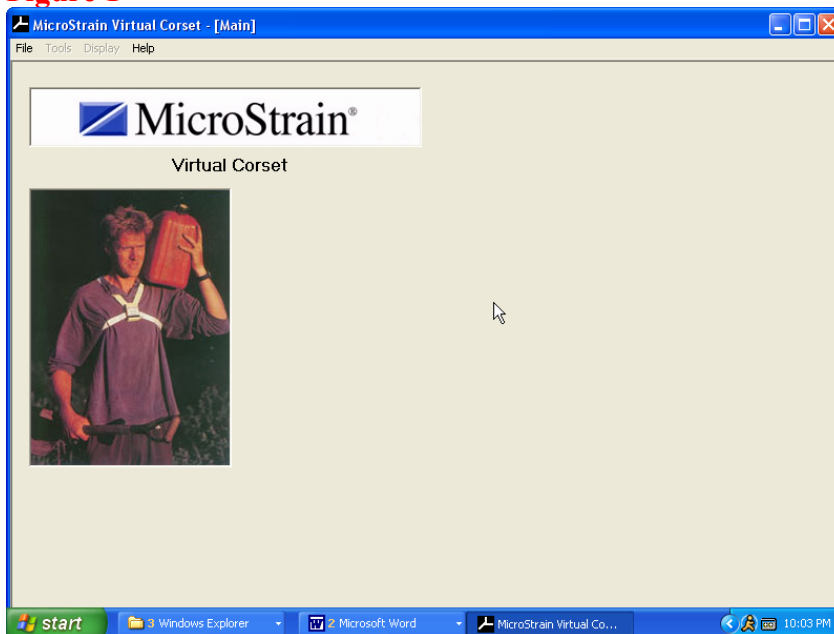
- Double-click the Virtual Corset™ Data Acquisition and Display desktop icon to launch the program.
- The **Main** screen will appear. [See Figure 1.](#)
- Click **File**.
- Click **Connect**. The **Connect** screen will appear. [See Figure 2.](#)
- Click **Auto Detect**.
- The application will poll each of the available serial ports on your computer and find any Virtual Corset™ that is connected to the computer.
- If a Virtual Corset™ is located, a message box will appear indicating a Virtual Corset™ has been found on a particular port. Click **OK** to close the message box.
- If a Virtual Corset™ is not located, a message box will appear indicating that no device was detected. Click **OK** to close the message box. Check your communications cable connections, your serial port, your battery or anything else that might be impeding communications. After checking these items, run **Auto Detect** again.
- After a successful **Auto Detect**, click the **OK** button on the **Connect** screen and you will be returned to the **Main** screen.
- Click **Display**.

- Click **Angles**. The **Angles** screen will appear. See Figure 3.
- Click **Data**.
- Click **Sample**. A check will appear to the left of the menu item.
- The X and Y angles will begin continuous display in the text boxes and on the aircraft dials.
- Click **Data**.
- Click **Sample**. The check will disappear from the left of the menu item and sampling will stop.

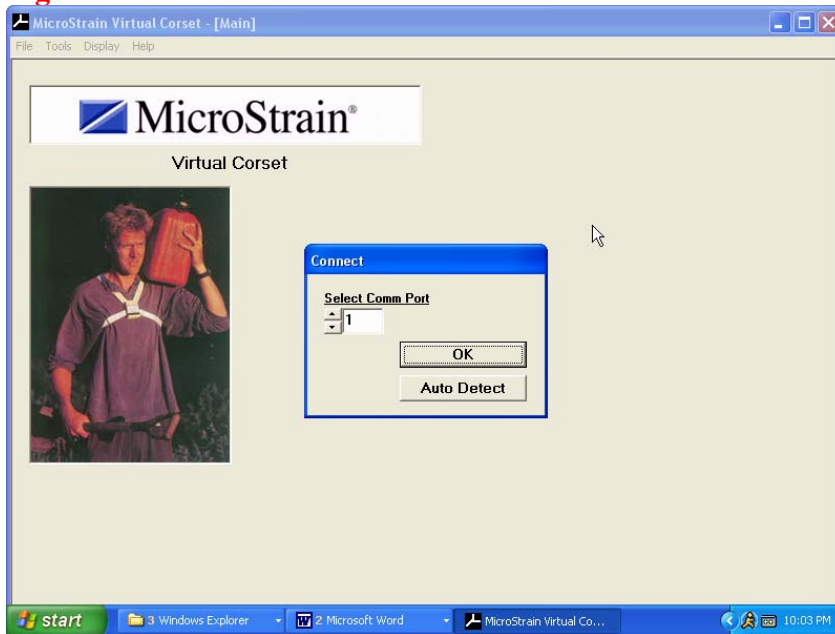
### **Congratulations!**

You are off and running! Please read the Virtual Corset™ users manual to learn how to successfully put your Virtual Corset™ to work.

**Figure 1**



**Figure 2**



**Figure 3**

